



CONVEYOR SOLUTIONS FOR PACKAGING



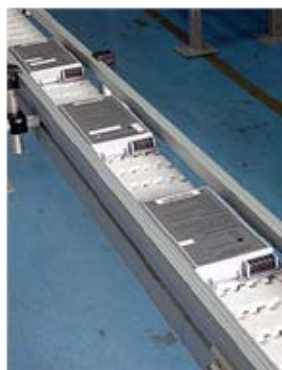


## **IN TODAY'S COMPETITIVE MARKET, PUTTING TOGETHER PACKAGING LINES REQUIRES ATTENTION TO DETAIL, FLEXIBILITY AND ROBUST EQUIPMENT DESIGNS.**

Packaging companies are constantly looking for new ways to reduce cost, add capacity, or introduce new products. Fast paced implementation schedules are consistently putting a burden on time. Whether it's engineering or production, it seems there is never enough time to get things done, regardless of your product segment. We can help. We have over forty years experience in implementing Food, Beverage, Personal Care, Pharmaceutical, Blow molding, Paper Converting, Automotive, Industrial and Electronics packaging lines.

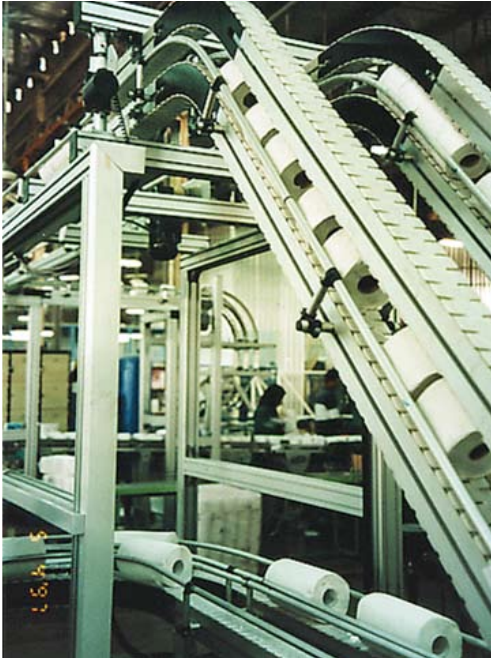
## **LET CONVEYOR EXPERTS PUT YOUR SYSTEMS TOGETHER.**

We offer turnkey installation, engineering support and training that is geared to your specific needs. We provide flexible solutions for your current demands, while taking into consideration future requirements. Our engineering is based on standardized components that offer increased capacity and improved utilization with your existing equipment. The combination provides more efficient conveyor layouts and greater performance.



## **APPLYING CONVEYOR TECHNOLOGY WITH INDUSTRY SPECIFIC APPLICATIONS.**

Our engineering staff relies on state-of-the-art conveyor technology and related automation. We are highly knowledgeable of the process equipment we need to integrate. If questions arise, we will contact the manufacturers of your unscramblers, fillers, cappers, case packers, palletizers and other equipment to work out the details of integration.



## FLEXIBILITY, DURABILITY, AND RELIABILITY.

We design equipment with three main characteristics:

- 1) **Flexibility** We build modular, standard equipment that is applicable to your current line layout, with the flexibility to change.
- 2) **Durability** We build solid equipment sized for the application and built to last.
- 3) **Reliability** We build conveyors that require little or no maintenance.

## GLOBAL SERVICE AND SUPPORT.

Our support is there when and where you need it. We maintain a 24/7 customer support hotline and have extensive spare parts inventories located around the globe.

We have service offices strategically located in the United States, Costa Rica, Malaysia and China.



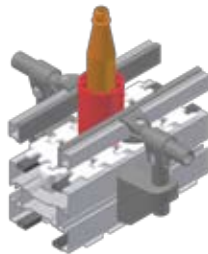


## MODULAR, FLEXIBLE CONVEYOR TECHNOLOGY.

Our modular conveyor engineering allows for rapid automation implementation—proven designs that are reliable requiring minimum maintenance.



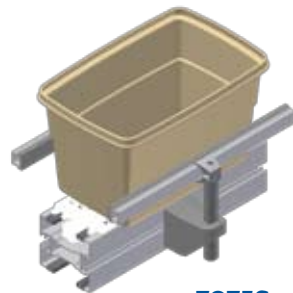
**BOTTLES**



**PUCKS**



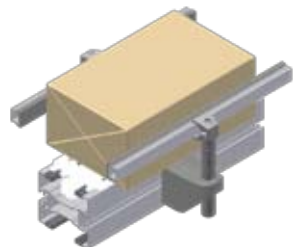
**CANS**



**TOTES**



**PALLETS**



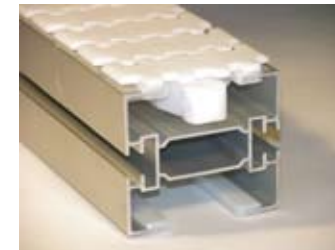
**CARTONS**

## CONVEYOR TYPES AND SIZES THAT ARE RIGHT FOR THE JOB.

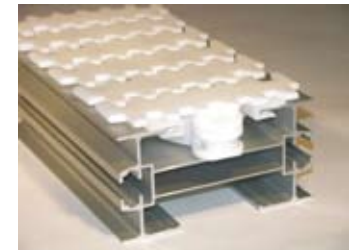
Our Simpli-Flex® line comes in a variety of sizes and construction types. We have the right conveyor for the job.



**SIMPLI-FLEX® 63**



**SIMPLI-FLEX® 83**



**SIMPLI-FLEX® 140**



**SIMPLI-FLEX® 63 SS**



**SIMPLI-FLEX® 83 SS**



**SIMPLI-FLEX® 140 SS**



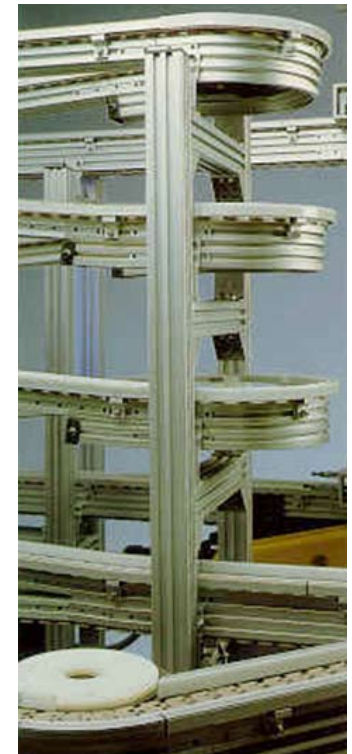
### ▣ ELEVATION CHANGES.

Floor space is expensive. Often you must go up and over to conserve room, or refrain from restricting access. We have a variety of application modules, from gripper elevators to case elevators; each is designed to achieve the task at hand within a minimum floor space and with high reliability.

### HORIZONTAL AND VERTICAL IN-LINE FIFO BUFFERING.

For level change or accumulation, as well as accumulation is required, an alpine conveyor is a great solution to allow for both. The in-line buffering and elevation/loweration is achieved without the need of additional drive units and controls, through a compact spiral conveyor configuration.

When floor space is available, horizontal buffering without line pressure is easy to achieve. With controls and a servo actuator, buffer levels can be dynamically adjusted.





**INCLINES AND DECLINES ALSO OFFER ALTERNATIVES TO CHANGE ELEVATIONS WHILE ACCUMULATING PRODUCT.**



**CUSTOM DESIGNED HANDLING CAN ADDRESS UNIQUE SITUATIONS LIKE CREATING WALKWAYS IN LONG LINES WHILE ACCUMULATING PRODUCT.**

ADVANTAGE  
**PUCK**



**SIMPLIMATIC IS A LEADER IN PUCK TECHNOLOGY AND PUCK HANDLING SYSTEMS.**

Are you dealing with an unstable product? Or perhaps you are just looking to minimize non-productive setup. Simplimatic is a leader in implementing pucks and puck handling technology. Our sister company, Advantage Puck Technology, is a leader in designing and producing pucks. At Simplimatic, we manufacture the application specific automation you will need to implement puck technology.



### ▣ PUCK HANDLING EQUIPMENT.

Simplimatic manufactures a line of puck handling equipment as well. Machines to insert packages into pucks, remove packages from pucks and return empty pucks back to the start of the line.



### PARTNER WITH CONVEYOR TECHNOLOGY EXPERTISE.

We have been a trusted name in conveyor technology since 1965, providing personalized service—from planning and implementation, to customization, to ongoing support and training. You get world-class automation solutions from professionals who understand your business and will be there as your business conditions change.

**We are dedicated to excellence in conveyor technology and related automation. We will work directly with you and the manufacturers to work out any integration questions.**



## ***YOUR GLOBAL PARTNER FOR CONVEYORS***



*Simplimatic Automation is a manufacturer of modular conveyors & automation for packaging and assembly production lines. The products we offer are used to automate production lines in the electronics, semiconductor, automotive, consumer products, paper converting, blow molding, food, beverage, pharmaceutical and personal care industries. Products are shipped, installed and serviced worldwide.*

Simplimatic Automation

109 Ramsey Place • Lynchburg, Virginia 24501 USA  
Telephone 1.434.385.9181 • Toll Free 1.800.294.2003  
support@simplimatic.com

[www.simplimatic.com](http://www.simplimatic.com)