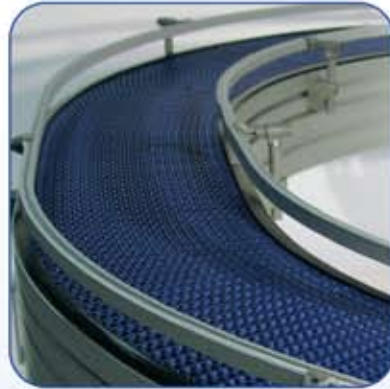




SIMPLIMATIC
AUTOMATION

SIMPLI-MAT™

MODULAR MAT-TOP CONVEYOR SYSTEM

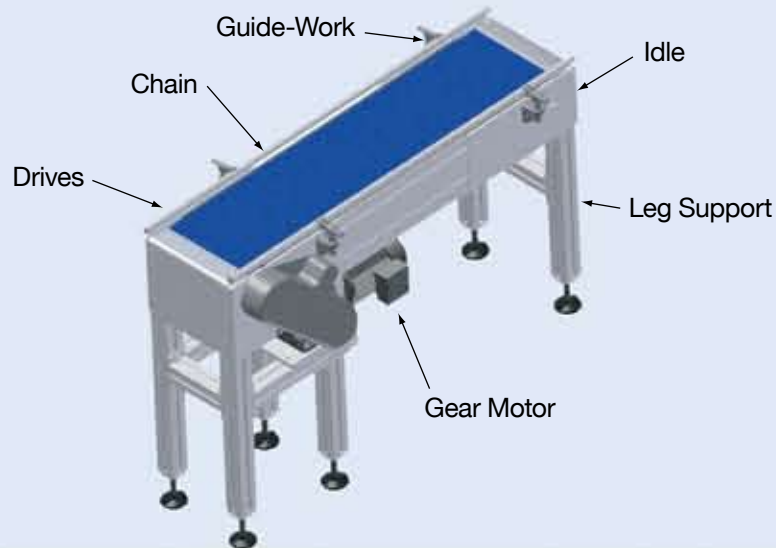


experience

energy

enthusiasm

Simpli-Mat™ 900 Modular Mat-Top Conveyor



Simpli-Mat™ 900

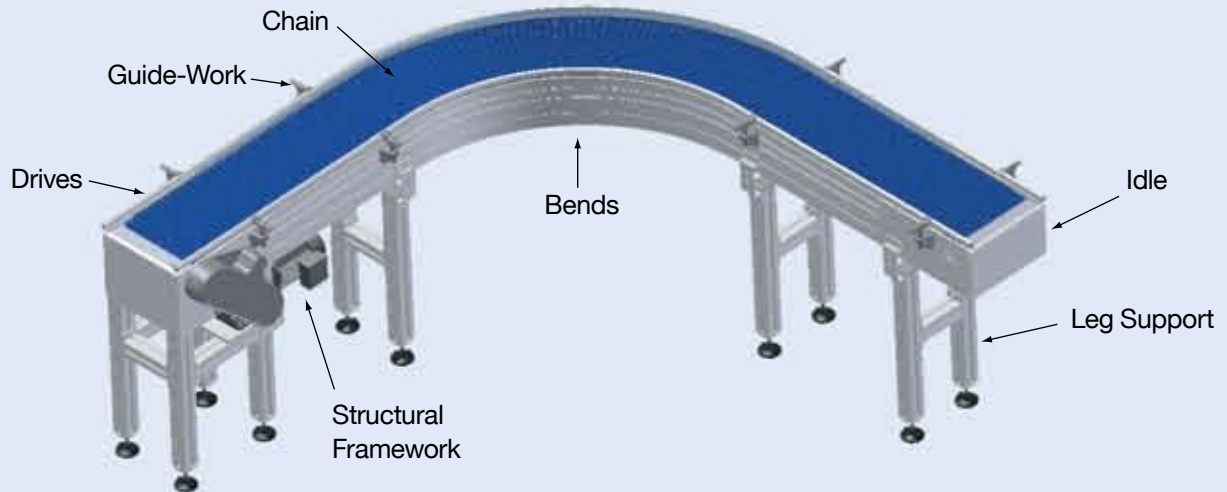
Simpli-Mat™ 900 is a modular straight running mattop plastic belt conveyor system for assembly and packaging production lines. Components are the same as used in the Simpli-Mat™ 2400. Simpli-Mat™ 900 is a more cost effective solution when bends are not required.

Simpli-Mat™ 2400

Simpli-Mat™ 2400 is a modular side-flexing mat-top plastic belt conveyor system for assembly and packaging production lines that require bends. The unique chain design allows a 2.2 to 1 turning radius. Components are designed to allow for quick assembly and re-configuration. A wide range of components offer maximum conveyor flexibility at a very competitive price.



Simpli-Mat™ 2400 Modular Mat-Top Conveyor



Rapid Automation

Simpli-Mat™ components are designed for efficient shipment, easy assembly, and quick reconfiguration. Entire material handling systems can be assembled from modular drive and idle sections, leg supports, guidework, chain, and frame sub-assemblies. Optionally, Simplimatic Automation will provide complete assembly. Hardware mounting slots in the aluminum extrusion allow easy component-to-component assembly at the job-site using standard hand tools.

Standard nominal widths are available in 6", 12", 18", 24", & 30" sizes. Standard lengths are available from .75 meter to 30 meters in .25 meter increments. Custom widths and lengths are available, please consult factory.

Typical automation applications include:

- Blow molding
- Personal care product handling
- Pharmaceutical and prescription fulfillment
- Consumer products
- Automotive component assembly
- Packaged food products
- Beverage

Structural Framework

Standardized support beams and brackets allow for a variety of conveyor leg support structures that include ceiling-hung and floor-mounted options.

Standard Features

- Aluminum extrusion designs allow for quick assembly, re-configuration and the addition of accessories
- Low-cost, high performance modular product guide system
- Wide selection of conveyor chains
- Durable construction
- Heavy-duty drive and idle assemblies
- Chain return roller system provides for ample chain catenary and allows for long chain pulls
- Simpli-Mat™ 2400 can be used in applications requiring 45° & 90° bends

Modular Product Guides

Product guides can be easily configured to accommodate a range of product sizes and shapes. Once assembled, the guides can also be easily adjusted as the conveying requirements change.

Drive Assembly

Modular drive assemblies come pre-assembled and includes 5.1 pitch sprockets on a 25mm bored and keyed shaft. Safety covers are provided for transmission driven gear-motor.



Bends

Turns come preassembled and are available in both 45° and 90° bends and include wearstrips and connecting strips.



Idle Assembly

Modular idle assemblies come preassembled and includes 5.1 pitch sprockets on a 25mm bored and keyed shaft.



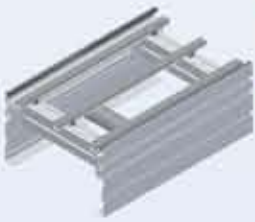
Leg Supports

Extruded leg supports are available in a variety of standard dimensions from 24" to 42" and include adjustable polyamide feet.



Body Sections

Body sections come preassembled from .25 to 3 meters and include wearstrips, return rollers and connecting strips.



Guide-work

A variety of standardized guide-work options are offered that provide multiple configurations depending on your application.



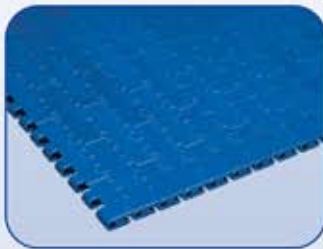
Mat-Top Modular Plastic Belting

Conveyor belts are made of plastic modules that are assembled in an interlocked, bricklayered pattern with full-length hinge rods. This inherently strong design is combined with a positive sprocket drive and tracking system which maintains proper belt alignment, reduces maintenance time and costs, and can lower overall power consumption. Chain is available in a variety of styles, materials and colors. The most common chain material is Acetal because it offers good fatigue endurance and resilience, making it an excellent choice when accumulating product. Polypropylene is a lower-cost alternative when accumulation and resilience to rough handling is not required. Listed below are the most common chain selections. Consult factory for other options.

Series 900

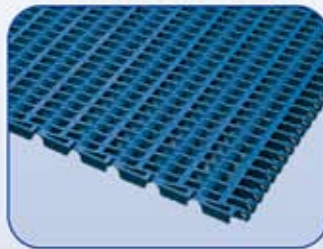
FLAT TOP

Offers a thick surface for a long service life. Its small, 1" (27mm) nominal pitch facilitates smooth operation with minimal chordal action, dead plate gap and speed pulsation.



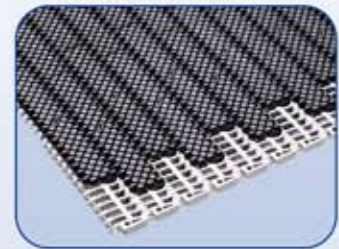
FLUSH GRID TOP

This strong 1" (27mm) nominal pitch belt features fully flush edges and a 38% open area.



SQUARE FRICTION TOP

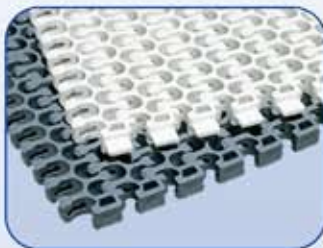
Two-material chain module provides a high friction surface without interfering with carry ways and sprockets. Used for inclined and declined applications.



Series 2400

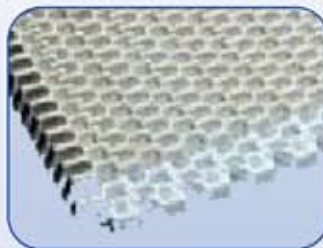
FLAT TOP

Strong, versatile belt with small holes, 42% open area and a 2.2:1 turning radius. Durable and easy to clean. Small pitch allows tight transfers of delicate products.



RADIUS FRICTION TOP

Rubber is bonded to the top surface of interior modules and provides a friction top surface for inclines and declines. Only available in polypropylene.



RADIUS W/ ROLLER INSERTS

Designed for low back pressure accumulation in applications requiring a radius belt. Offers 42% open area and a 2.9:1 turning radius. Wide roller-to-rod contact areas means less wear.



C U S T O M E R S E R V I C E I S
O U R T O P P R I O R I T Y



Simplimatic Automation is a manufacturer of modular conveyors & automation for packaging and assembly production lines. The products we offer are used to automate production lines in the electronics, semiconductor, automotive, consumer products, food, pharmaceutical and personal care industries. Products are shipped, installed and serviced worldwide. See our website for our worldwide list of authorized solution centers.



109 Ramsey Place • Lynchburg, VA 24501 U.S.A.
Phone: 434-385-9181 • Fax: 434-385-7813
www.simplimaticautomation.com

Email: sales@simplimaticautomation.com